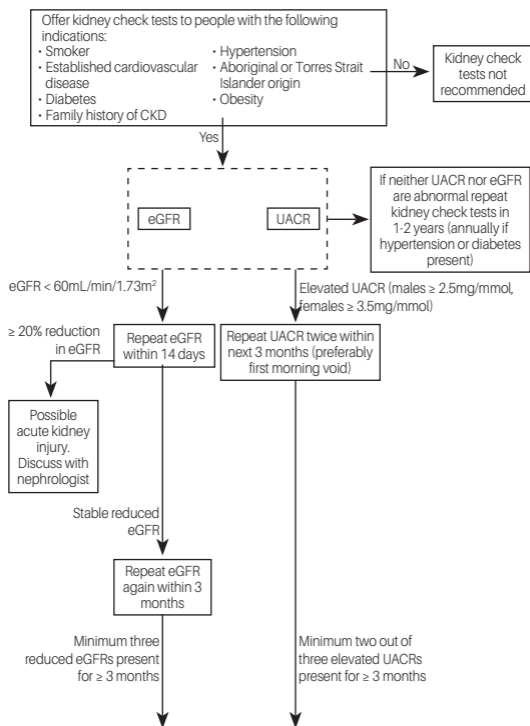


Screening for Proteinuria and Chronic Kidney Disease (CKD)



Kidney function stage	GFR (mL/min/1.73m ²)	Albuminuria stage		
		Normal (UACR, mg/mmol male: < 2.5 female: < 3.5)	Microalbuminuria (UACR, mg/mmol male: 2.5-25 female: 3.5-35)	Macroalbuminuria (UACR, mg/mmol male: >25 female: >35)
1	≥ 90	Not CKD unless haematuria, structural or pathological abnormalities present		
2	60-89			
3a	45-59			
3b	30-44			
4	15-29			
5	< 15 or on dialysis			

Combine eGFR stage (1-5), albuminuria stage and underlying diagnosis to fully specify CKD stage (e.g. stage 2 CKD with microalbuminuria secondary to diabetic kidney disease). Refer to colour-coded action plans in Chronic kidney disease (CKD) management in general practice. 2nd ed. Kidney Health Australia, 2012

CKD = chronic kidney disease
 eGFR = estimated glomerular filtration rate
 UACR = urinary albumin-to-creatinine ratio